

SIDELINE options at a glance

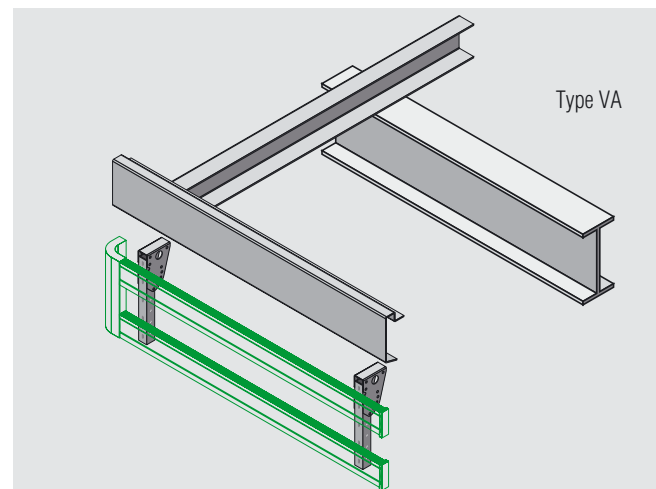
SIDELINE mountings

- Type VA, for all vehicles and superstructures, without bracing, rigid and hinged version available.
Installation on the external frame, on the floor, on the transverse rail.

All SIDELINE mountings are approved by TÜV and are height and width adjustable in steps of 80 mm. Precise adjustment by means of the long holes.

SIDELINE profiles

Rail profiles suitable for all mounting systems in 3200, 3600, 4000, 5200, 6000 mm length. End profiles and caps are also available.

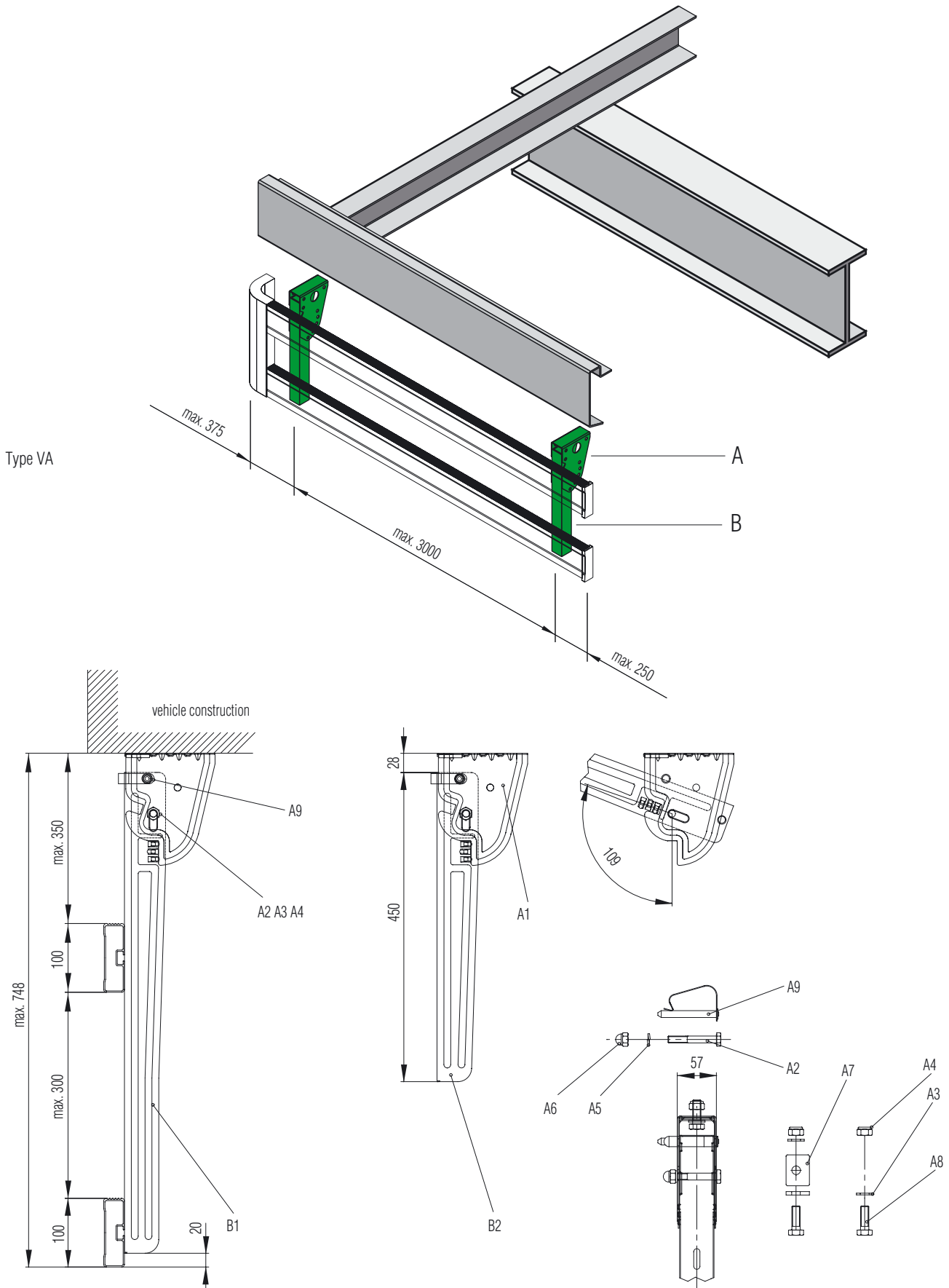


50.06.01.2

Construction elements

Side underrun systems

SIDELINE Type VA – Stainless steel



Technical specifications are for guidance only and without guarantee. Right to structural change reserved.

SIDELINE Type VA – Stainless steel**Side-protection device for commercial vehicles****Type VA – Stainless steel – fixing components**

Layout: suspension built-in, hinged

Complete equipment for 1 vehicle

Components	[Quantity]	Description	Weight [complete/kg]	Part No.
A	4	Reversing fixture, installation by screw	2.00	502 971 000
	4	Accessory bag for component A	1.04	502 978 000
B	4	U-profile vertical 700 mm	4.00	502 671 000
B	4	U-profile vertical 450 mm (alternative)	2.68	502 674 000

Items supplied and spare parts

Position	[Quantity]	Description	Material	Dimensions [mm]	Norm	Part No.
----------	------------	-------------	----------	--------------------	------	----------

Reversing fixture and accessory bag (component A) Items supplied with each group of components

A 1	1	Reversing fixture	Stainless steel	1.5 / 57 / 130 / 163	–	–
A 2	1	Hexagon screw	A 2 / 70	M 10 x 70	EN 24014	–
A 3	2	Washer	A 2	12	EN ISO 7090	–
A 4	2	Locknut	A 2 / 70	M 12	EN ISO 10511	–
A 5	1	Lock washer	A 2 / 70	10	DIN 127	–
A 6	1	Cap nut	A 2 / 70	M 10	DIN 1587	–
A 7	1	Plate	dacromet-coated	–	–	–
A 8	2	Hexagon screw	A 2 / 70	M 12 x 35	EN 24017	–
A 9	1	Spring plug bolt	galvanized	10 x 70	–	502 617 000

U-profile (component B) Items supplied with each group of components

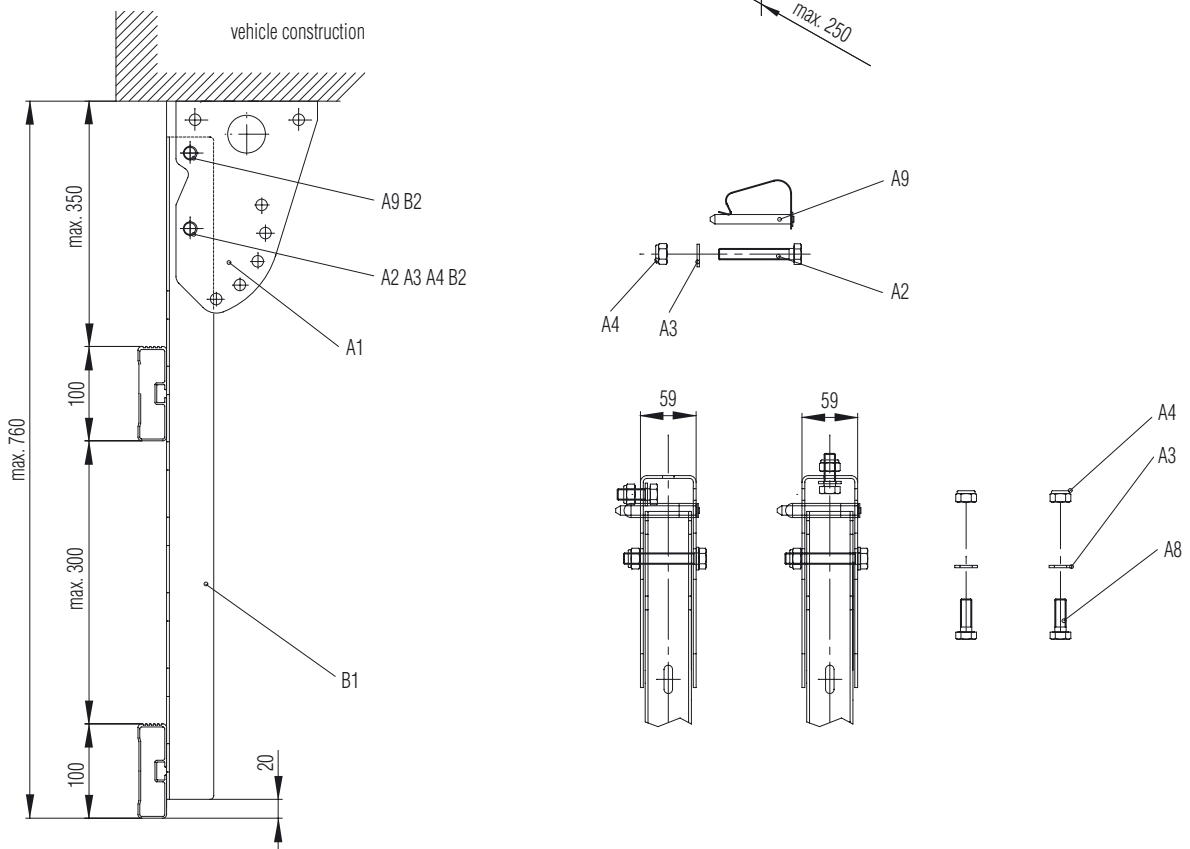
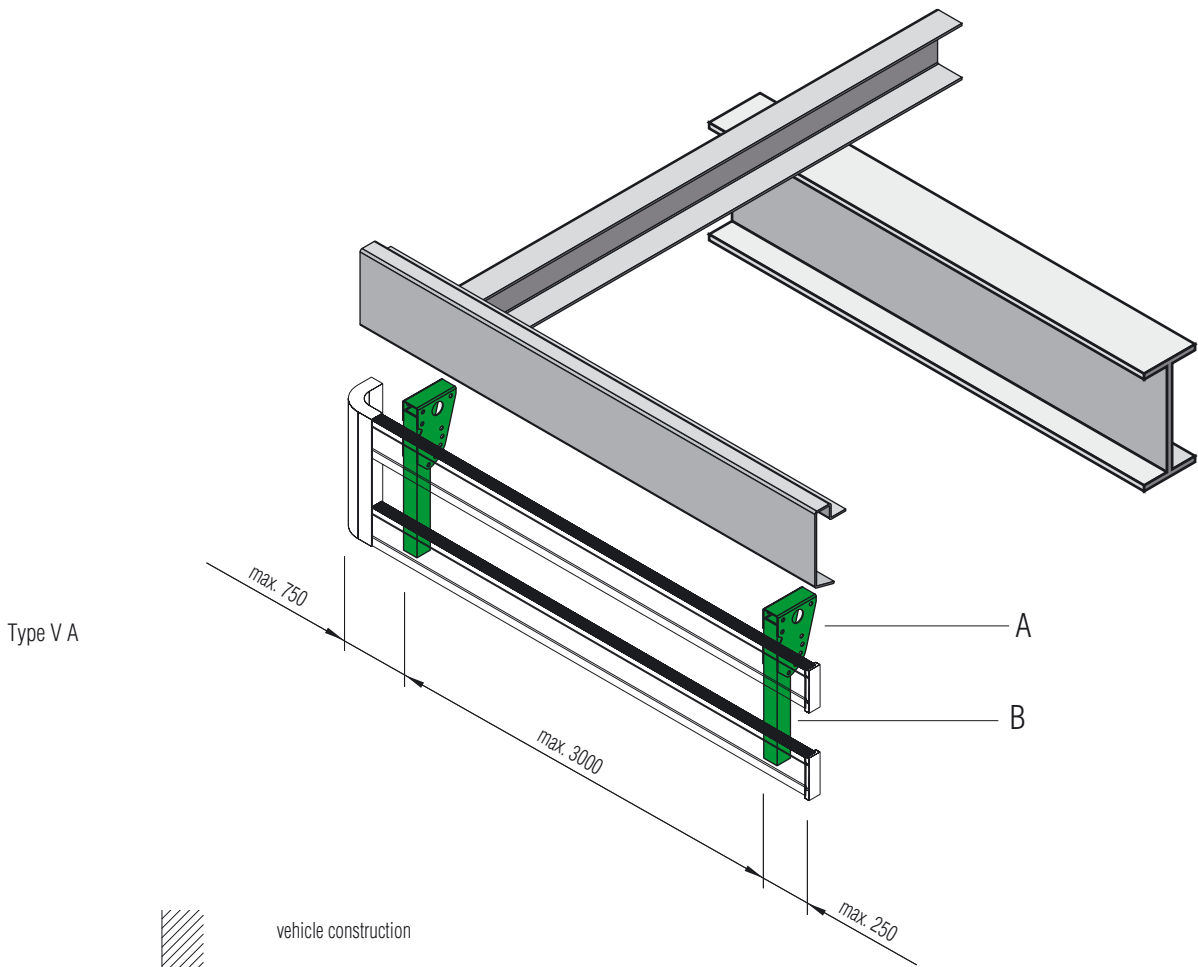
B 1	1	Grid profile 700 mm	Stainless steel	1.2 / 50 / 60 / 700	–	–
B 2	1	Grid profile 450 mm	Stainless steel	1.2 / 50 / 60 / 450	–	–

50.06.01.4

Construction elements

Side underrun systems

SIDELINE Type VA – Steel galvanized/black powder coated



Technical specifications are for guidance only and without guarantee. Right to structural change reserved.

SIDELINE Type VA – Steel galvanized/black powder coated**Side-protection device for commercial vehicles****Type VA – Steel – fixing components**

Layout: supports, suspension built-in, hinged

Complete equipment for 1 vehicle

Components	[Quantity]	Description	Weight [complete/kg]	Part No.	
				Steel, galvanized	Steel, black powder-coated
A	4	Reversing fixture	5.6	502 970 000	502 972 000
	4	Accessory bag for component A	–	502 979 000*	502 979 000*
B	4	U-profile vertical	8.8	502 670 000	502 672 000
	4	Accessory bag for component B	–	502 679 000	502 679 000

* galvanized in compliance with DIN EN ISO 2081, level 3, NSS 192 h

Items supplied and spare parts

Position	[Quantity]	Description	Material	Dimensions [mm]	Norm	Part No.
----------	------------	-------------	----------	--------------------	------	----------

Reversing fixture and accessory bag (component A) Items supplied with each group of components

A 1	1	Reversing fixture	Steel ¹	3 / 59 / 150 / 225	–	–
A 2	1	Hexagon screw	Steel 8.8, galvanized	M 12 x 80	EN ISO 4014	–
A 3	6	Washer	Steel, galvanized	13 x 24 x 2.5	EN ISO 7090	–
A 4	3	Locknut	Steel, galvanized	M 12	EN ISO 10511	–
A 8	2	Hexagon screw	Steel 8.8, galvanized	M 12 x 35	EN ISO 4017	–
A 9	1	Spring plug bolt	Steel, galvanized	12 x 90	–	502 615 000

U-profile and accessory bag (component B) Items supplied with each group of components

B 1	1	Snap-in profile	Steel ¹	3 / 50 / 50 / 698	–	–
B 2	4	Headed bush	Plastic	–	–	502 638 000

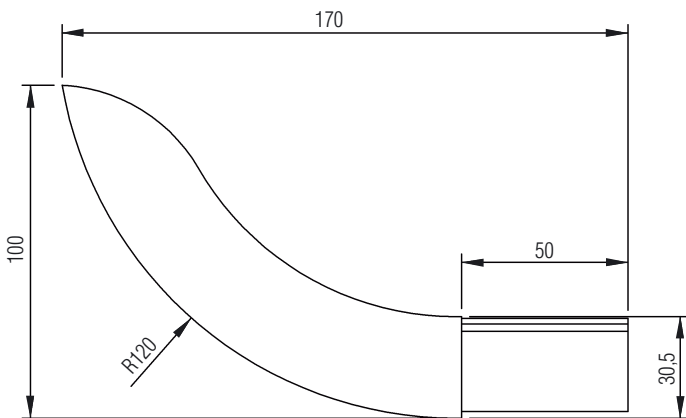
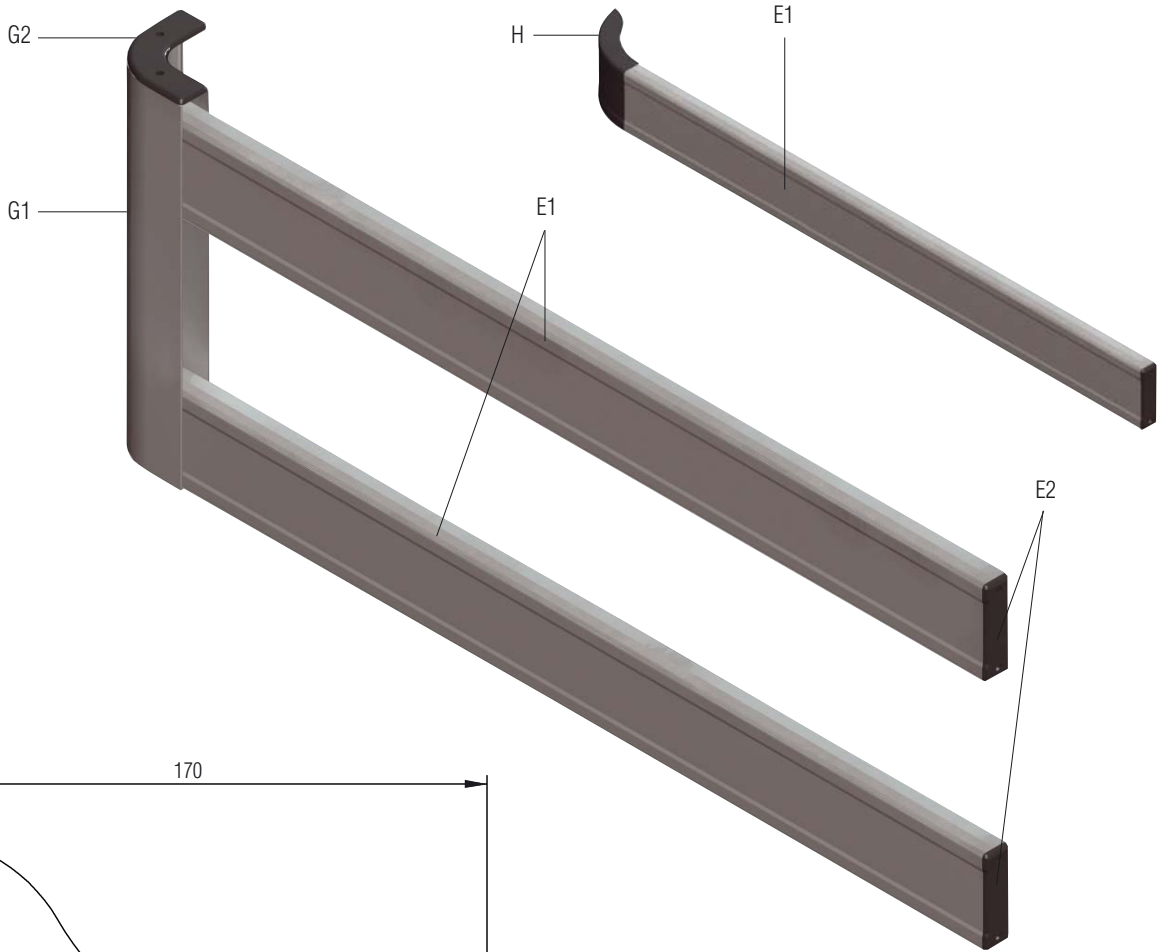
¹ Steel galvanized / Steel black powder-coated

50.06.01.6

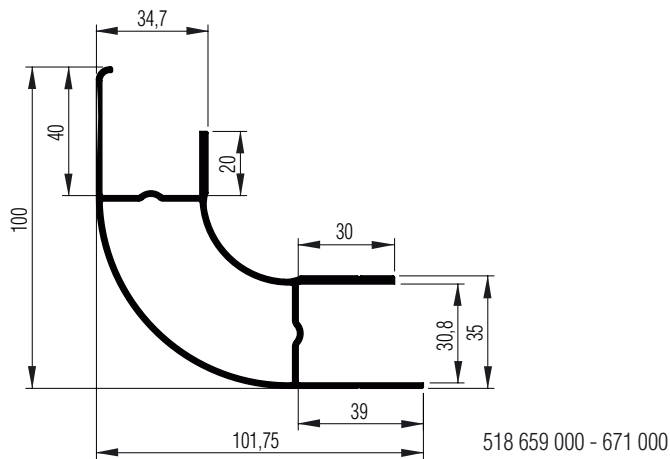
Construction elements

Side underrun systems

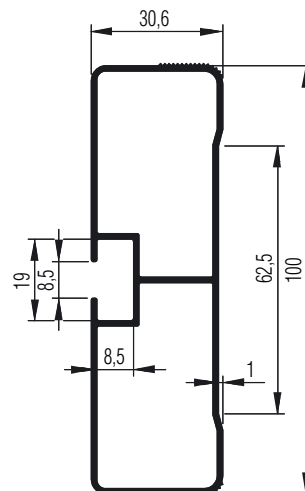
SIDELINE Rail components



518 565 001



518 659 000 - 671 000



518 603 000 - 625 000

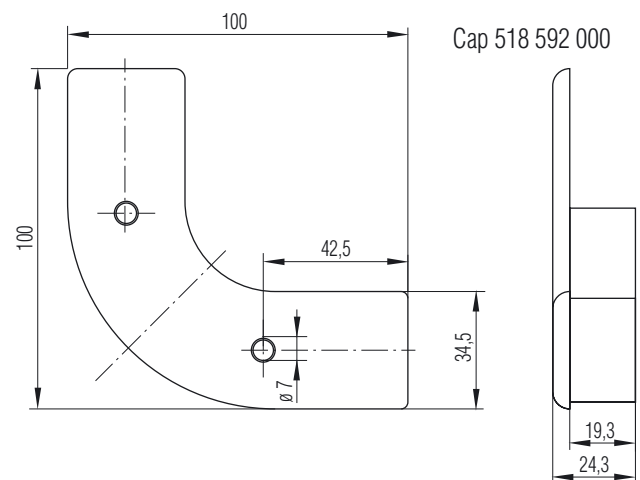
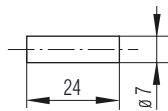
Technical specifications are for guidance only and without guarantee. Right to structural change reserved.

Side-protection device for commercial vehicles

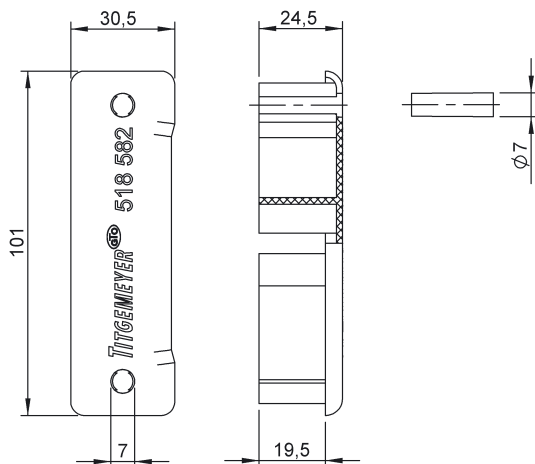
Rail components

Profiles

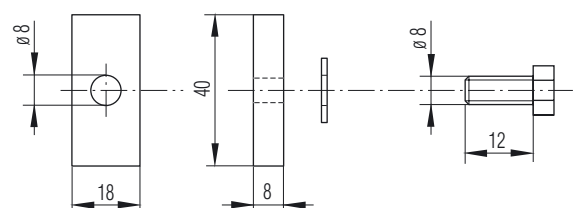
Position	[Quantity]	Description	Material	Dimensions [mm]	Norm	Weight [unit/kg]	Part No. mill finish	Part No. silver anodized	Part No. black anodized	Part No.
E 1	1	Rail section	Aluminium	3200	–	3.4	518 603 000	518 604 000	518 605 000	–
	1		Aluminium	3600	–	3.8	518 607 000	518 608 000	518 609 000	–
	1		Aluminium	4000	–	4.2	518 613 000	518 614 000	518 615 000	–
	1		Aluminium	5200	–	5.5	518 617 000	518 618 000	518 619 000	–
	1		Aluminium	6000	–	6.3	518 623 000	518 624 000	518 625 000	–
E 2	1	End caps	Plastic black	–	–	–	–	–	518 582 001	
F	1	Fixing set	–	–	–	–	–	–	518 548 001	
–	1	• Screwed plate (E)	Steel galvanised	40 x 18 x 8	–	–	–	–	518 546 000	
–	1	• Hexagon screw (E)	Steel galvanised	M 8 x 12	EN 24017	–	–	–	–	
–	1	• Washer (E)	Steel galvanised	8.4 x 17 x 1.6	EN ISO 7090	–	–	–	–	
G 1	1	Radius profile	Aluminium	500	–	0.8	518 659 000	518 660 000	518 661 000	–
	1	Radius profile	Aluminium	5000	–	8.2	518 669 000	518 670 000	518 671 000	–
G 2	1	Cap	Plastic black	–	–	0.05	–	–	–	518 592 000
H	1	Radius section	Plastic black	–	–	0.3	–	–	–	518 565 001

Spare partPlastic pin for fixing end caps
518 582 001 and 518 592 000**Part No. 518 599 000**

End cap 518 582 001



Fixing set (Pos. F)

Part No. 518 548 001

Technical specifications are for guidance only and without guarantee. Right to structural change reserved.